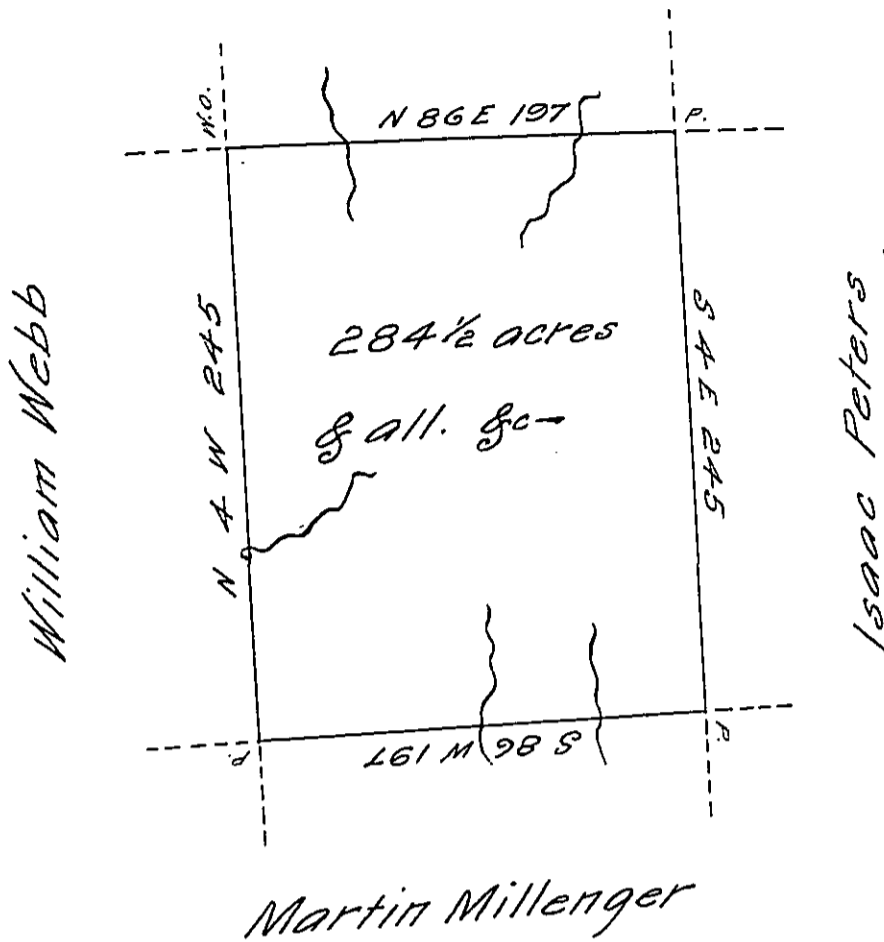


Christopher Rorer



A draft of a ~~tract~~ tract of land situated in But-
 ler county on the waters of Bull creek and
 Buffaloe creek containing two hundred & eighty
 four & an half acres & allowance of six per cent
 for roads &c, surveyed the 22^d May 1807 in pur-
 suance of a warrant granted to John Brene-
 man for 280 acres, dated 4th March 1793

Ja^s Irvine D.S.

Sam^l Cochran Esq^r S.G.

IN TESTIMONY that the above is a copy of the original remaining on file in
 the Department of Internal Affairs of Pennsylvania, made
 conformably to an Act of Assembly approved the 16th day of
 February, 1833, I have hereunto set my Hand and caused
 the Seal of said Department to be affixed at Harrisburg,
 this twenty-ninth day of May 1906

Geo. C. [Signature]
 Secretary of Internal Affairs